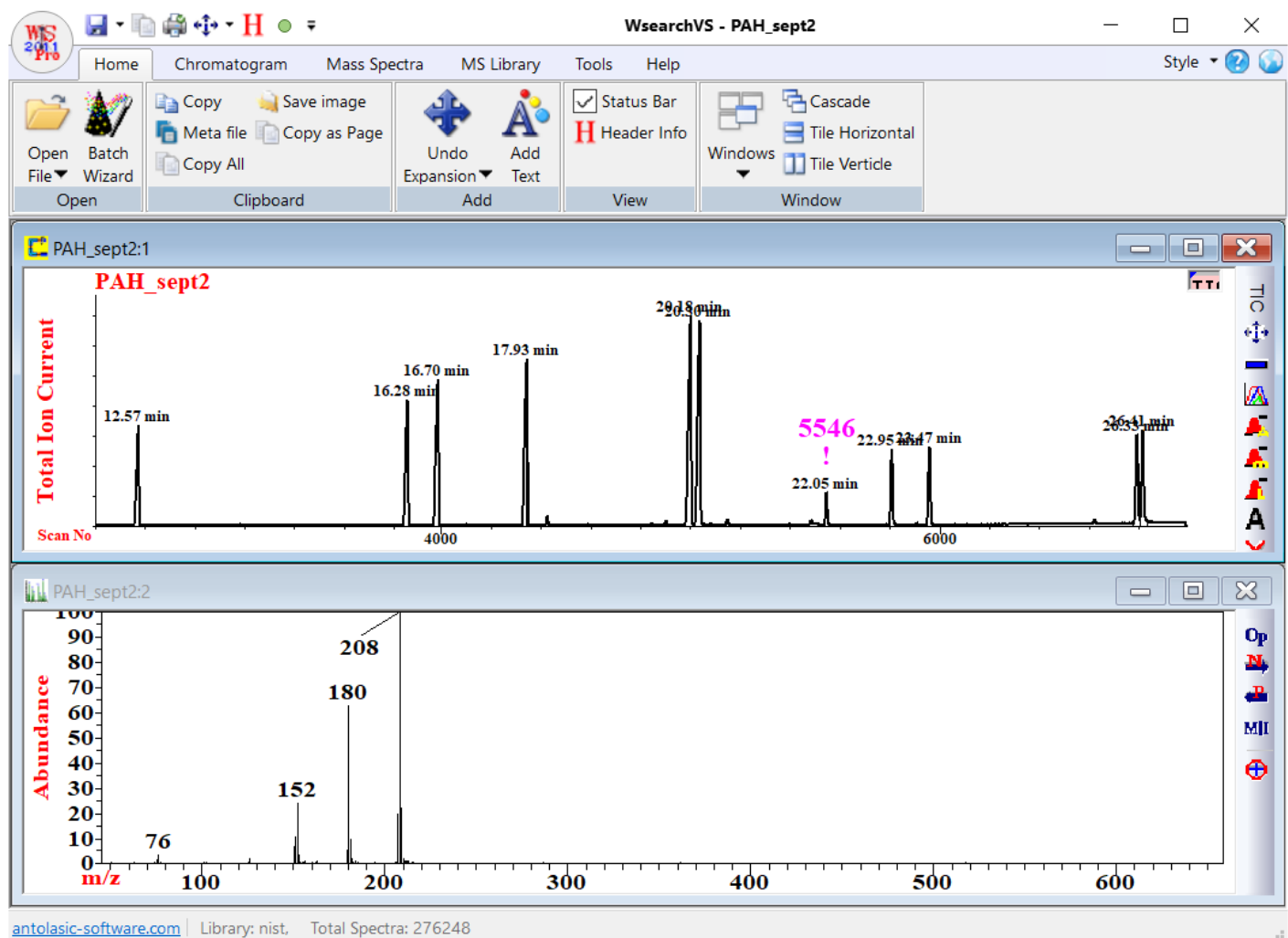
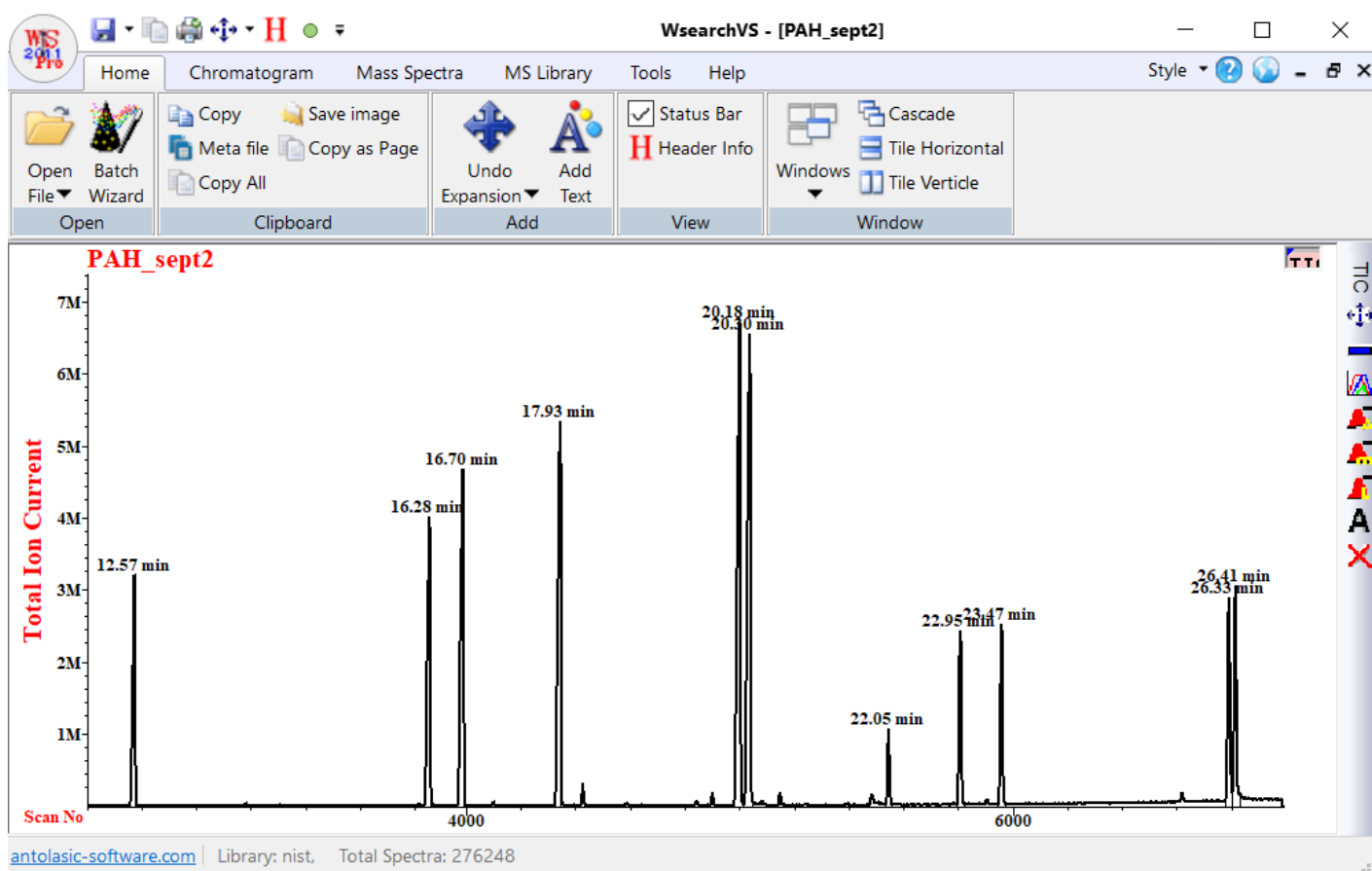


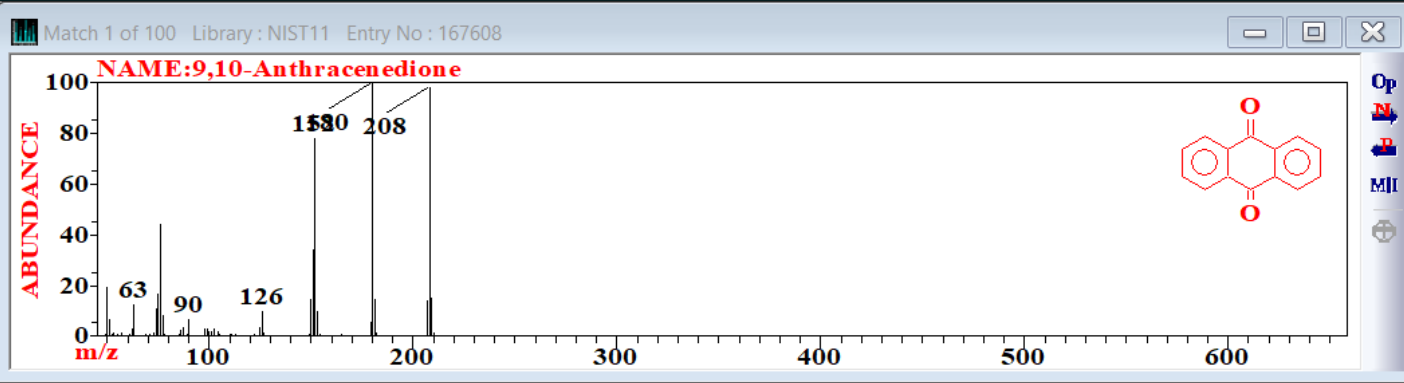
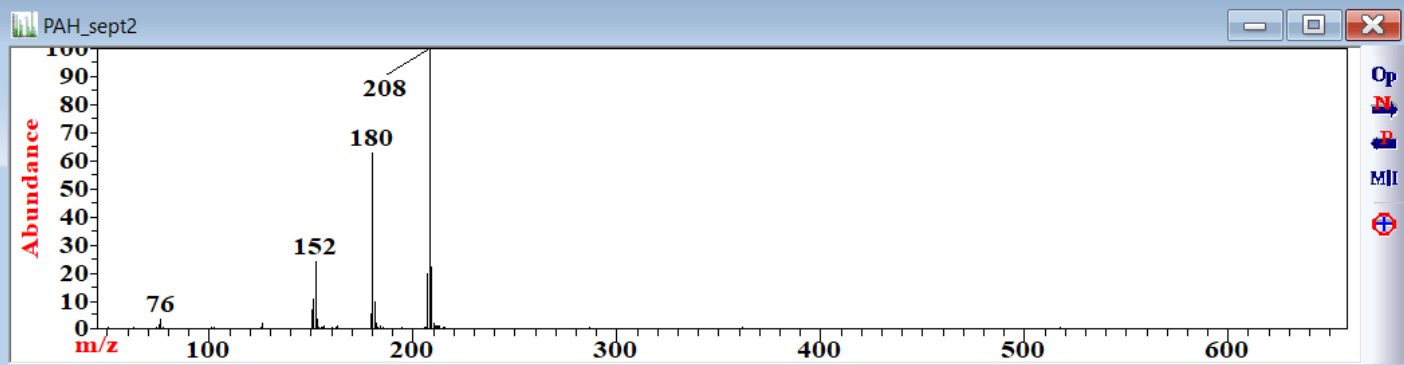
Screen shots of WsearchVS2020Pro

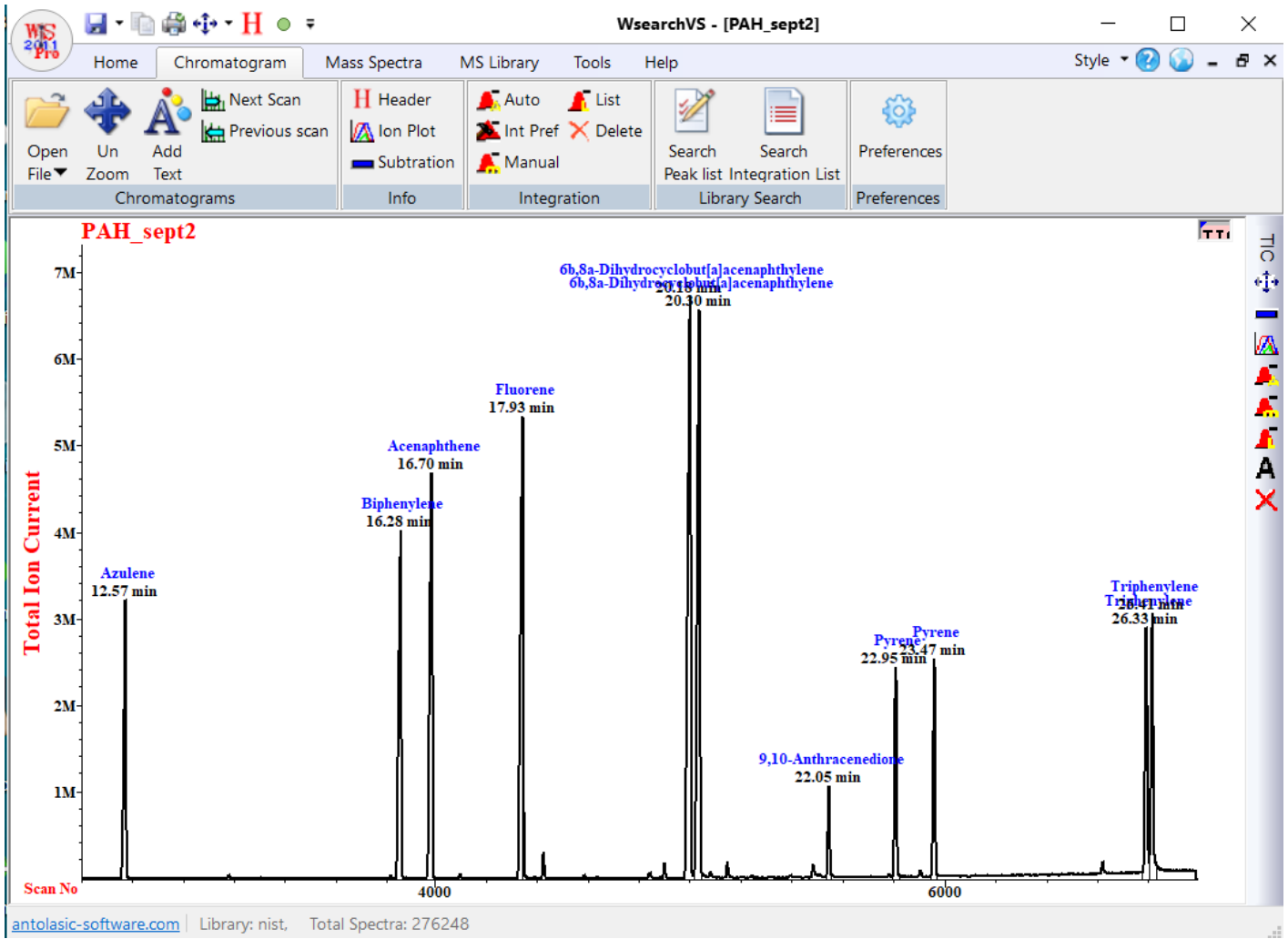


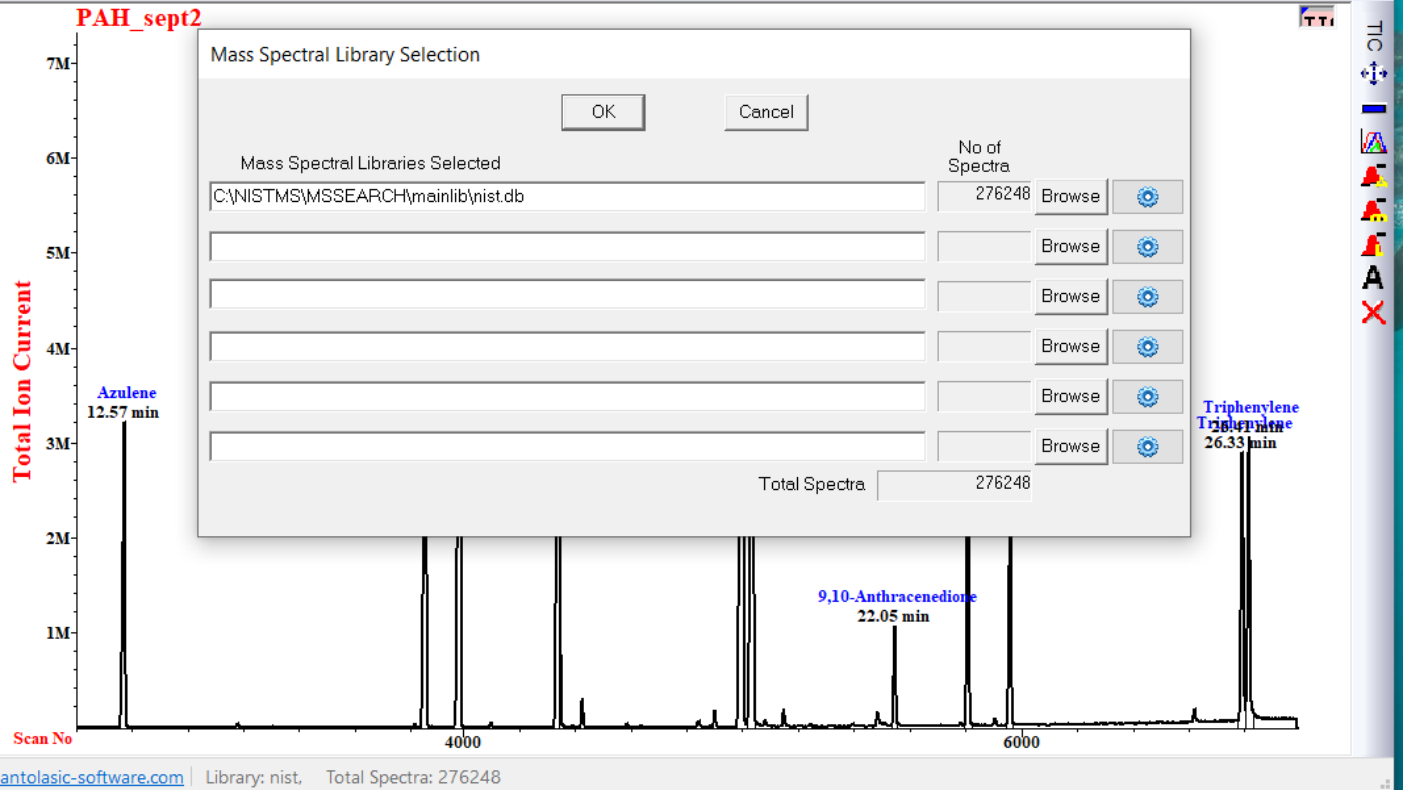
WsearchVS - PAH_sept2

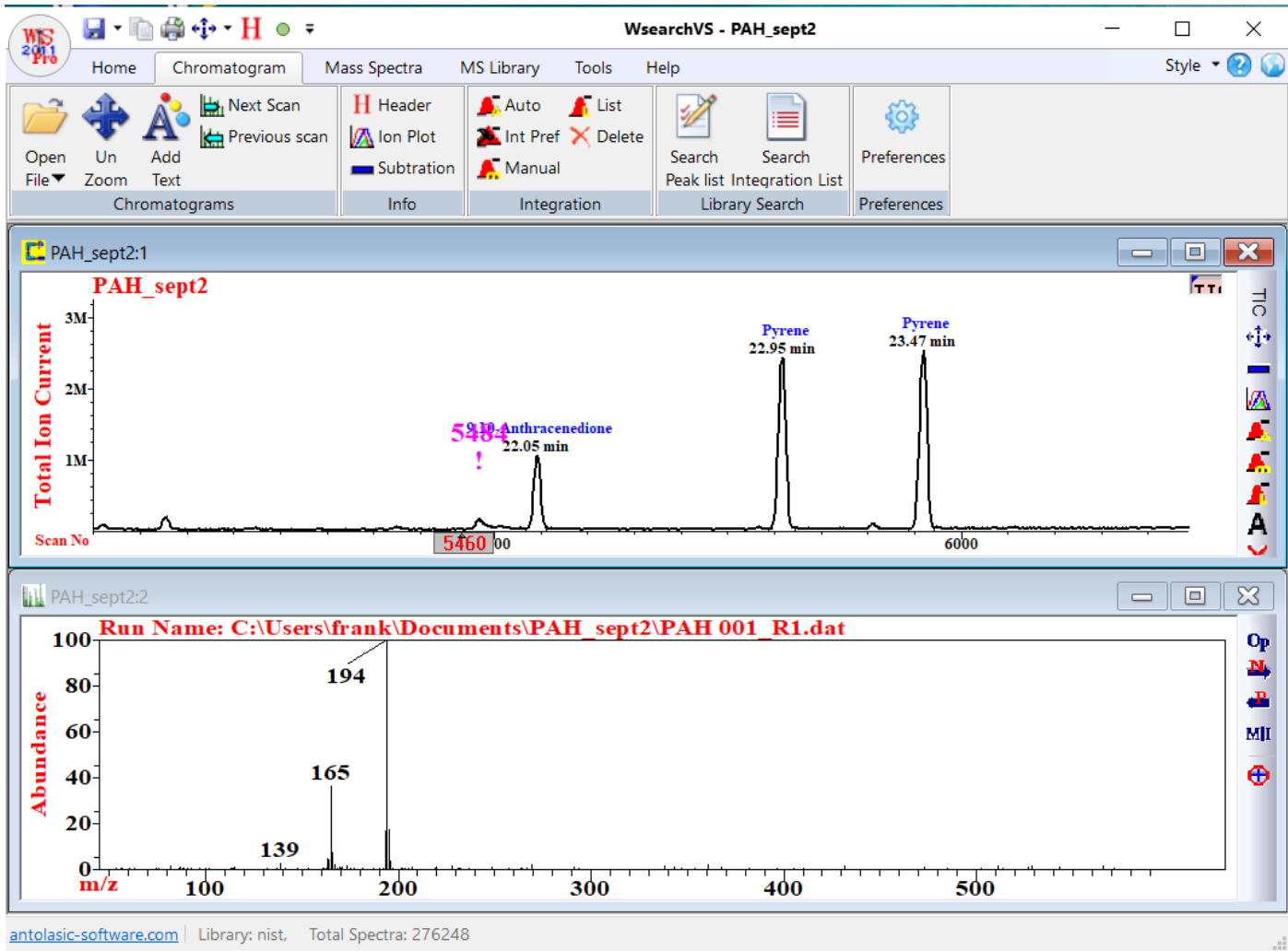
Home Chromatogram Mass Spectra MS Library Tools Help

Open Batch File Wizard Save image Copy as Page Copy All Copy Undo Expansion Add Text Status Bar Header Info Cascade Tile Horizontal Tile Vertical





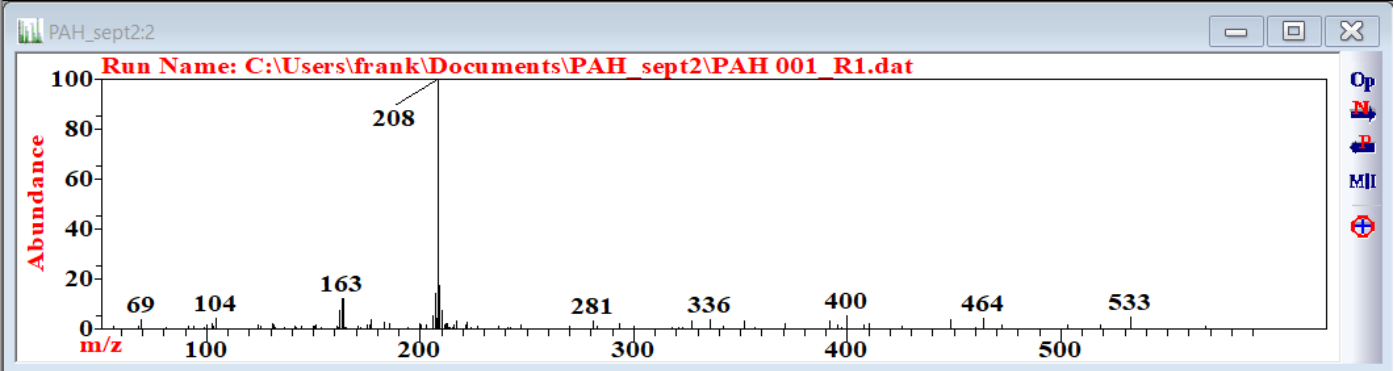
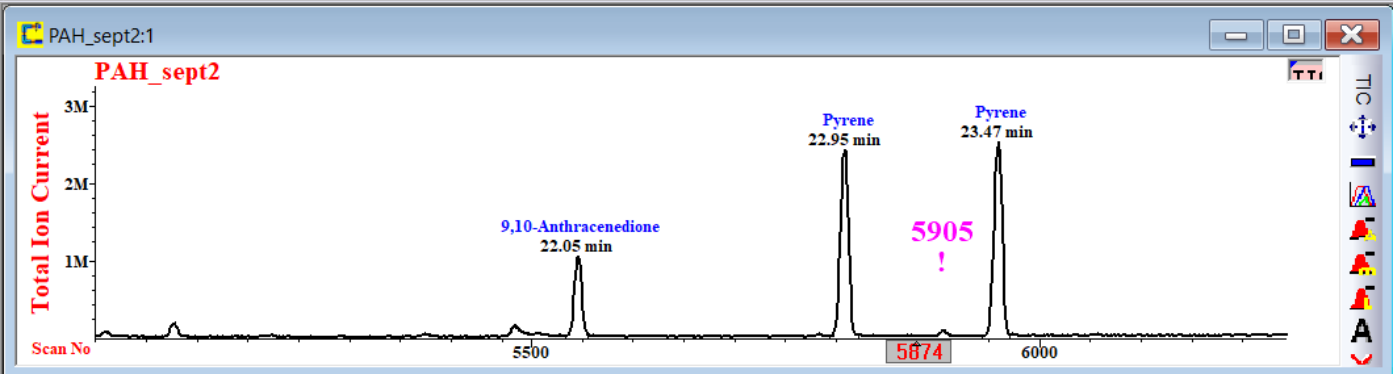




WsearchVS - PAH_sept2

Home Chromatogram Mass Spectra MS Library Tools Help

Molecular Weight Calculators Electrospray Elemental Composition Common Ions Atomic Elements



antolasic-software.com | Library: nist, Total Spectra: 276248

Batch Wizard: Select Files to Process

C: Files to add for processing 0

- C:
 - \$Recycle.Bin
 - Documents and Settings
 - G09W
 - hp
 - Intel
 - Microsoft
 - NISTMS
 - OneDriveTemp
 - peL_apps
 - peL_data
 - PerfLogs
 - Program Files
 - Program Files (x86)
 - ProgramData
 - Quant
 - Recovery
 - SWsetup
 - System Volume Information
 - SYSTEM.SAV
 - Users
 - Windows
 - hiberfil.sys
 - pagefile.sys
 - swapfile.sys
- D:

Add >

Add All >>

Remove

Remove All

< Back Next > Cancel Help

BATCH: Select Required Action

Batch File Export

- HP Chemstation
- NetCDF
- Excel Export chromatograms Export All Spectra
- mzXML

Batch Save Processes

- Save Integration to file
- Save TIC and selected ions to Files

Batch Export or Save to the following Directory

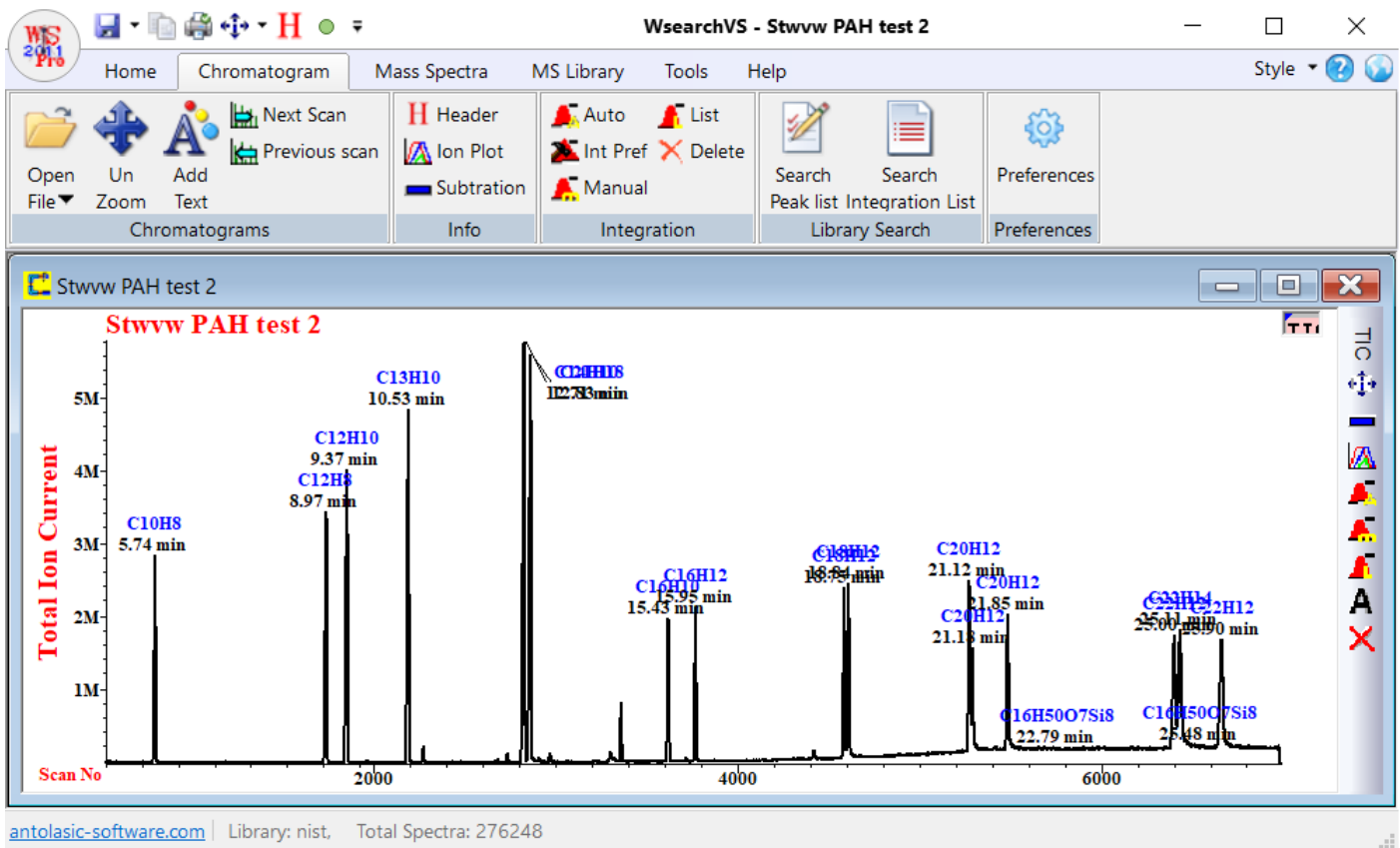
Batch Printing

- Chromatograms
- Integration

Batch Processing

- Library Search Integration List

< Back Next > Cancel Help



Integration Listing



File : C:\Users\frank\Documents\2019_local\Stwww PAH test 2\PAH 001_R2.dat
 Misc : Clarus680
 Operator : RMIT
 Acquired : 2 SEP 2019 15:49
 Peak Threshold : 1 % Integration On Time : 2 min

Peak #	RT	Start	End	Abs Area	Area(%)	Height	Lib Name	Lib Formula	CAS No
1	5.74	5.69	5.78	27851227	3.079	2849342	Azulene	C10H8	275-51-4
2	8.97	8.91	9.02	38493925	4.255	3445525	Acenaphthylene	C12H8	208-96-8
3	9.37	9.30	9.41	47782516	5.282	4012109	Acenaphthene	C12H10	83-32-9
4	10.53	10.46	10.57	56922507	6.293	4838457	Fluorene	C13H10	86-73-7
5	12.71	12.63	12.76	72637682	8.030	5763255	6b,8a-Dihydrocyclobut[a]a...	C14H10	30736-79-9
6	12.83	12.76	12.87	66956786	7.402	5585255	7,8-Diphenylbicyclo[4.2.1]n...	C21H18	54049-09-1
7	15.43	15.39	15.49	20255890	2.239	1987315	Pyrene	C16H10	129-00-0
8	15.95	15.90	16.00	20704517	2.289	2129289	2,3-Dihydrofluoranthene	C16H12	30339-87-8
9	18.75	18.71	18.80	25403037	2.808	2408984	naphthalene, 1-(2-phenylet...	C18H12	--0
10	18.84	18.80	18.88	25420052	2.810	2468605	Triphenylene	C18H12	217-59-4
11	21.12	21.08	21.16	27657563	3.057	2492494	Benzo[b]fluoranthene	C20H12	205-99-2
12	21.18	21.16	21.23	18251322	2.018	1581047	Benzo[k]fluoranthene	C20H12	207-08-9
13	21.85	21.80	21.89	26907758	2.975	2039612	Benzo[k]fluoranthene	C20H12	207-08-9
14	22.79	22.78	22.94	9308479	1.029	213721	Octasiloxane, 1,1,3,3,5,5,7...	C16H50O7Si8	19095-24-0
15	25.00	24.92	25.05	35319197	3.904	1756170	Dibenzo[def,mno]chrysene	C22H12	191-26-4
16	25.11	25.05	25.17	38676049	4.276	1836342	Benzo[b]chrysene	C22H14	214-17-5
17	25.48	25.43	25.59	10320594	1.141	264693	Octasiloxane, 1,1,3,3,5,5,7...	C16H50O7Si8	19095-24-0
18	25.90	25.81	25.96	39212593	4.335	1699636	Dibenzo[def,mno]chrysene	C22H12	191-26-4

Threshold